



Two deep boreholes to answer some questions :



Phase 1 - Lower crust

What minerals form these rocks?

Are these rocks thermal insulators or conductors?

Are there volatiles in these rocks?

What processes formed the continental crust?

Is there evidence of life also at those depths?

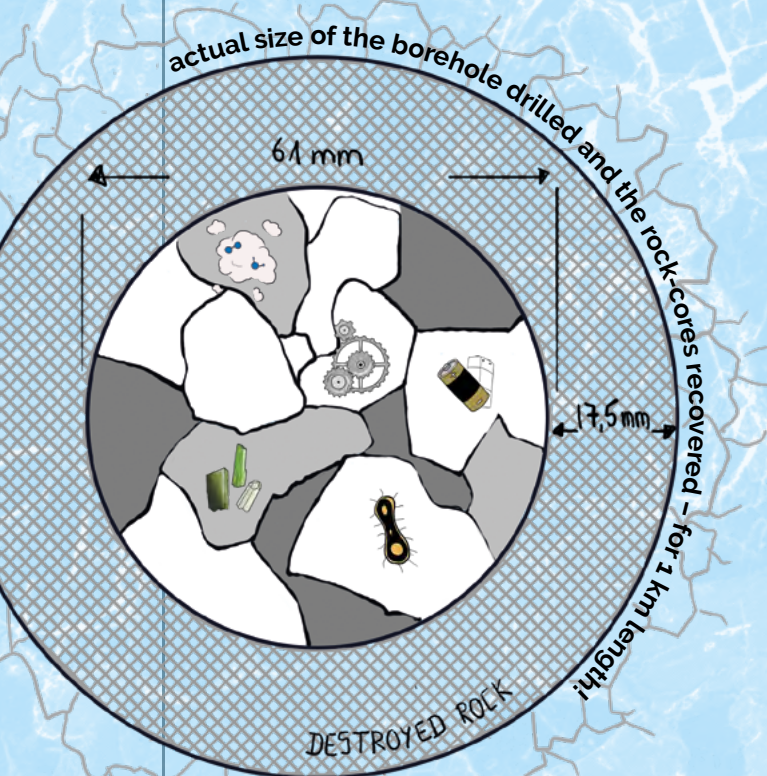
"An international scientific project to probe the deep continental crust and its transition to the mantle"

Drilling the Ivrea – Verbano zone

contact & info

www.dive2ivrea.org

info@dive2ivrea.org



In this scientific research project, we DIVE through rocks to reach the bottom of the Earth crust. Instead of a scuba we will use a drill rig! It will be hot, it may be wet, and we may even find traces of microbes.

Do you like diving?

Come and see us as we DIVE!



A unique site for multi faceted research

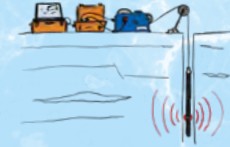


The Earth's deep crust is exposed at the surface, due to a tectonic accident, the **Insubric Line**

Drilling two, 1-km deep holes



Geophysical measurements in the holes



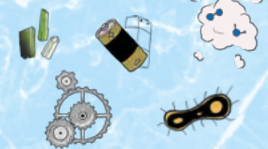
Field lab for working on extracted rock cores



Surveying outcrops



Geology, geophysics, fluid chemistry, microbiology



Laboratory work, computer models



Education and outreach

